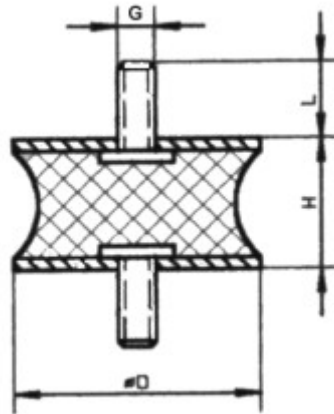


Typ AT:



Durchmesser	Höhe	Gewinde x Länge
18	12	M4 x 11
30	20	M8 x 23
40	48	M8 x 26
50	30	M10 x 28
50	40	M10 x 28
50	50	M10 x 28
60	65	M10 x 28
75	40	M12 x 37
100	75	M16 x 43
35	15	M8 x 20
50	30	M10 x 20
55	30	M10 x 22